

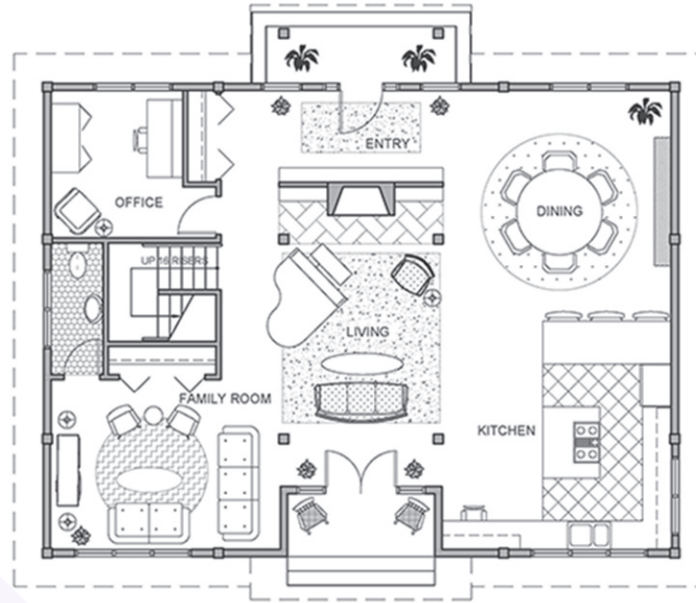
Interior Design at PCC

Portland Community College, Sylvania Campus, Science & Technology Building (ST), Room 200, tel: 971|722|4163

Program Advisor: Arlene McCashew: arlene.mccashew1@pcc.edu

Department Chair: Amanda Davis: amanda.davis12@pcc.edu

***please plan to attend an information session before contacting the program advisor, times and dates can be found on our program our program website: www.pcc.edu/programs/interior-design/*



Associate of Applied Science Degrees

- Interior Design

One year, or less than One Year Certificates:

- National Kitchen and Bath Association (NKBA) Kitchen and Bath
- Interior Furnishings
- Sustainable Design
- Design for Aging and Accessibility in Place

Career and Program Description

Interior designers specialize in creating uniquely defined environments that cater to the spatial needs and functional requirements of its user, drawing from a diverse set of skills. Students in this program learn to apply design principles and techniques to professional planning and furnishing of residential interiors.

PCC's Interior Design program is the only two-year degree program in residential interior design in Oregon and Southern Washington. Our graduates are sought by employers for their unique abilities: adept design problem solving, ability to draw from historical traditions, and effective communication skills. The degree program prepares students for an entry-level position as an Interior Designer, or for more advanced placement in the wholesale or retail sales business. Emphasis is placed on a broad scope of courses which are application-oriented. The curriculum includes a range of courses from Interior Design, Architecture, Art and Business. Students have the option to gain hands-on experience through an internship. For more information about career prospects within the industry, consider visiting the following website. Enter "Interior Designer" in the Occupation Title box: <http://www.qualityinfo.org/olmis/OIC>

Our program is an open-ended program; you may begin the program at any time during the year and can typically be completed in 8 or 9 terms. However, it can be completed either part-time, or full-time with **classes offered during the day, and in the evenings**. Some of the more advanced coursework is offered during the day, so students will need to be flexible in their schedules.

Our focus is on residential interior design. We are a strong technical program. **Students will need to have good basic computer skills**. Open computer lab times with relevant software are available for student use. The software PCC currently uses is AutoCAD, REVIT, Google SKETCHUP Pro, Photoshop and InDesign.

An interest in construction technology is necessary. Coursework is very project-oriented and deadline driven, with emphasis placed on detailed drawings and an ability to research and solve problems. Students must receive a "C" or better in all required classes in order to receive an associate's degree in Interior Design. Pass/No pass or "D" grades are not accepted towards fulfilling program requirements. **All core classes are offered at the Sylvania Campus.**

Students who complete this degree should be able to:

- Apply the principles and concepts of color and design throughout the creation of residential client-based projects.
- Produce architecturally accurate drawings by applying correct architectural graphics and drafting standards.
- Incorporate and articulate appropriate historical perspectives in creating residential projects.
- Apply building codes and an understanding of Americans with Disability Act to residential design projects.
- Utilize an understanding of professional practice methodology, ethics, selling techniques and communication/listening skills.
- Apply skills in leadership, negotiation, interpersonal and teamwork communication.

In conjunction with the Architectural Design and Drafting program, we offer options for obtaining certificates in four areas of emphasis:

- **NKBA Kitchen and Bath Certificate (50 CR)**
- **Sustainable Design (43 CR)**
- **Design for Aging and Accessibility in Place (49 CR)**
- **Interior Furnishings (41 CR)**

The **Sustainable Design certificate** provides course work from Architecture, Interior Design, Building Construction, Social Sciences and Science as it relates to sustainable, or “green” building issues. This program will focus on creating buildings that are sited, designed, constructed, operated, and maintained for the health and well-being of the occupants, while minimizing impact on the environment.

The **NKBA Kitchen and Bath certificate** includes course work from architecture and interior design and prepares the student to take the National Kitchen and Bath Association exams to become an Associated Certified Kitchen and/or Bath Designer. Please see <http://www.nkba.org/> for more information about the National Kitchen and Bath Association.

The **Design for Aging and Accessibility in Place certificate** includes coursework from architecture, interior design, sociology and gerontology studies.

The **Interior Furnishings certificate** coursework is embedded in the Associates’ Degree. This course of study is defined by the skills needed in the interior furnishings industry. Students can expect this course of study to lead to positions in sales and retail showrooms.

While students can obtain a certificate without an associate’s degree, these certificates are intended to enhance student’s knowledge and skills of interior design in these specific areas while they are learning the design/drafting fundamentals required within the degree program.

The Interior Design program is a Career/Technical program. While there are some options to transfer to various schools to obtain a Bachelor’s degree, **this is not a transfer program**. If you are considering transferring to a four year university, please plan to work with a general advisor for information about a General Transfer Degree. The Interior Design program advisor can give you some suggestions as to which Interior Design classes will transfer to other schools.

Course Suggestions for Getting Started in the Interior Design Program

**Please refer to the online schedule at: <http://www.pcc.edu/schedule/> for class times and course recognition (CRN) numbers.

First Term Course Suggestions:

ARCH 110 (2 CR)- Introduction to Architectural Drawing

*this class must be taken before or concurrently with ID 131.

ARCH 124 (3 CR)- Introduction to Building Systems

ID 131 (3 CR) - Introduction to Interiors

ARCH 127 (3 CR)- Google Sketchup

ART 215 (3 CR)- Introduction to American Residential Architecture

General Education classes- Math and/or Writing depending upon COMPASS placement scores.

Second Term Course Suggestions:

ID 125 (3 CR)- Introduction to AutoCAD

ARCH 100 (3 CR)- Graphic Communication for Designers

ID 120 (3CR)- Interior Products and Materials

ARCH 132 (2 CR)- Residential Building Codes

ARCH 121 (2 CR)- Structures 1 (prerequisite or concurrent is ARCH 124)

It is strongly recommended that students register in ARCH 110 and ID 131 their first term. Students must register in ARCH 110 first, or at the same time as ID 131. Students may register in any additional classes as well, as long as they meet the prerequisite.

General Education Requirements

All candidates for the Associate of Applied Science in Graphic Design must complete 16 credits from courses listed under General Education **in the PCC catalog.

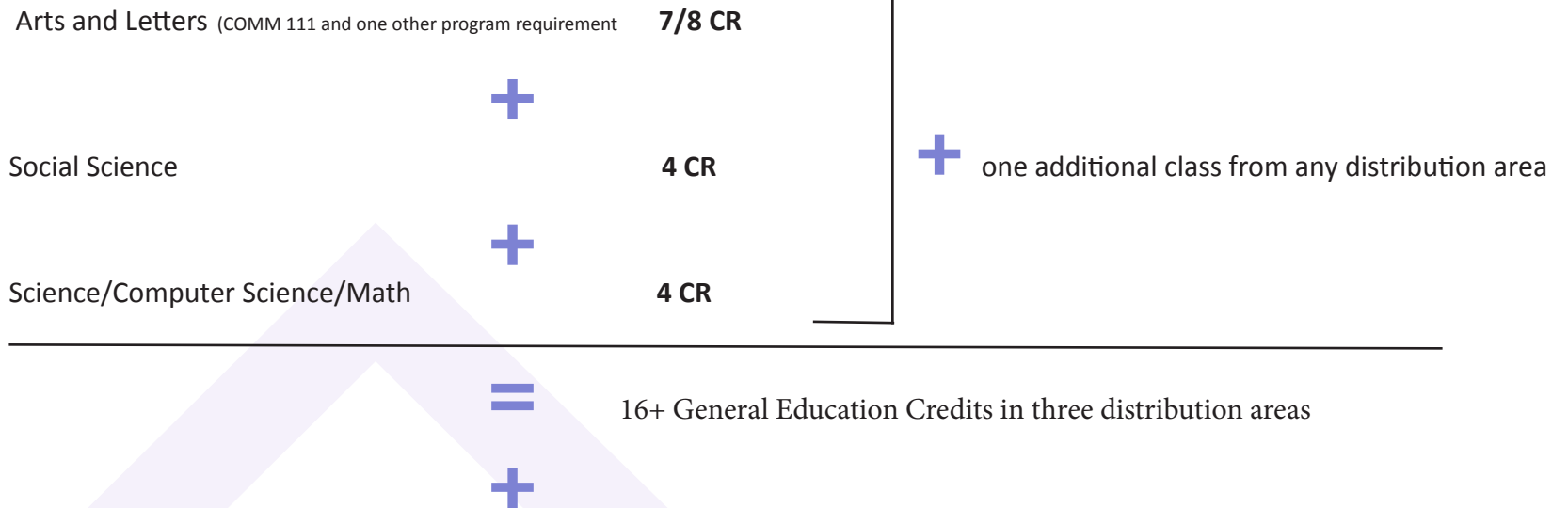
The **16 credits** must include at least one (1) course and no more than eight (8) credits from each of the following three categories:

1. Arts and Humanities 2. Social Science 3. Mathematics (> 100 level), or Natural and Physical Science or Computer Studies.

- No more than eight (8) credits may come from any one subject
- No more than two (2) courses may come from courses required by specific programs
- General Education requirements may be waived for students with a previous A.A., A.A.S., B.S., B.A. or B.F.A. degree from an accredited United States institution.

Students will also be required to complete competency requirements in Writing.

General Education



Students will also be required to complete **competency requirements in Writing;**

- Pass WR 121 or a lower division writing course with a prerequisite of WR 121 with a grade of C or higher

*** Math 20 or higher is a standard prerequisite for most general education classes.*

If you are new to PCC, here are the steps to get started:

1 **Enroll as a PCC credit student:**

Note: on the admissions form, list “degree seeking”. Your major will be AAS Interior Design Online: www.pcc.edu/admissions. The online enrollment process takes up to 72 hours.

2 **Receive your G# (Student Identification Number)** and confirmation of enrollment.

3 **Choose your classes:** Please see the Interior Design program planners attached to this information sheet to plan your first two terms of classes. Plan to see the Program Advisor for subsequent term planning once you are in your second term of the program.

4 Prepare for and take the **COMPASS placement test** if you are new to college.

5 **Register for the class** (if the class is full you may have the option of putting yourself on a wait list). You can find the schedule of classes online at www.pcc.edu/schedule. Please refer to the program course planners for required introductory coursework: You will need your G#, the course number (example ARCH 110), and the CRN (5 digit course recognition number). You can register online: Through your myPCC Account: www.pcc.edu/mypcc. Log onto myPCC using your user name (usually your firstname.lastname) and your password (usually your birthday the very first time you log in; 2 digits for the day, 2 digits for the month, 2 digits for the year). Click on the “Add/Drop” link under Registration Services to register for classes.

6 **Pay for the Course:**

Payment for the course is due two weeks prior to the start of class. **If you fail to make a payment plan before the due date, you may be dropped from your classes.**

Pay in the form of cash, check, or credit card at any campus Business Office or online through your MyPCC account.

You will not receive a bill in the mail. It is your responsibility to make sure your bill is paid prior to the payment due date. You can find your account information on the Paying for College tab on your MyPCC.

7 **Getting to Campus**

Public Transport: TriMet bus service to Sylvania Campus; call 503-238-RIDE (7433) or see TriMet website <http://www.trimet.org/index.htm> for more information.

PCC Shuttle: PCC has free shuttle buses that run on a regular schedule to the Sylvania Campus, but not on Saturdays. See schedules at: www.pcc.edu/resources/parking/shuttle/

Parking permits: <http://www.pcc.edu/resources/parking/>. You may purchase a parking permit either at the business office, or online through myPCC.

8 **Attend Class.**

Make sure you attend the first day of class or the instructor may give away your seat to someone on the waitlist.

If you are transferring from another college:

If you are transferring to PCC from another college, follow the instructions below. However, you may not need to take the COMPASS placement test. PCC waives General Education requirements for students who have a previous degree (except Math if you have not taken it previously). Here are the steps to transfer in coursework:

- 1** Request OFFICIAL copies of your transcript be sent to PCC from the school(s) from which you are transferring .
- 2** Once PCC has received your transcripts, they will notify you by your PCC email. You can access your email by logging onto myPCC using your user name (usually your firstname.lastname) and your password (usually your birthday the very first time you log in; 2 digits for the day, 2 digits for the month, 2 digits for the year).
- 3** Have your PCC transcripts evaluated by PCC: Log onto myPCC, from the home tab, click on “transfer credit evaluation” tab. If there are no prior Architecture or Interior Design classes to transfer, go ahead and register for introductory classes.
- 4** If you wish to have previous Architecture or Interior Design classes transferred; obtain copies of course descriptions of all coursework you would like to have evaluated by the program.
- 5** Once you have official transcripts evaluated by PCC admissions and records, and have obtained course descriptions of relevant coursework, submit them directly to the department adviser: arlene.mccashew1@pcc.edu. Don't forget to include your ID or G# and the specific classes you would like to transfer in towards the program requirements. Evaluations typically take several weeks to complete so plan ahead.

Interior Design Coursework

ID 120 Interior Products and Materials I (3.00 CR) Analysis and evaluation of products utilized in the design profession including selecting case goods and upholstered goods, and emphasis on measuring and specifying floor coverings and window treatments. This course is recommended for ID 121, Interior Products/Materials II. Prerequisite: ID 131; WR 115 or placement into WR 121; MTH 20 or placement into MTH 60. Audit available.

ID 121 Sustainable Materials for Residential Interiors (3.00 CR) Analysis and evaluates materials utilized in interior design including walls, ceilings, counters, accessories, and other products. Prerequisites: WR 115 or placement into WR 121; MTH 20 or placement into MTH 60. Audit available.

ID 122 History of Furniture-Ancient to 1800 (3.00 CR) Studies and analyzes styles of furnishings from antiquity through the 18th century. Includes contemporary usage as well as the mixing of period furniture styles. Audit available.

ID 123 History of Furniture-1800 to Present (3.00 CR) Studies and analyzes furnishings from the 19th century to the present. Includes contemporary usage as well as the mixing of period furniture styles. Prerequisites: ID 122; WR 115 or placement into WR 121. Audit available.

ID 125 Computer Drafting for Interior Designers (3.00 CR) Introduces computer aided design software as a drafting tool for residential design. Covers creation and modification of drawings such as floor plans, elevations, furniture and lighting plans, and three-dimensional projections. Focuses on interior plans and elevations of cabinetry for kitchen/bath design, writing/calculating specifications, and how to use drawings to communicate design concepts to clients. Audit available.

ID 128 Digital Rendering and Presentation (3.00 CR) Introduces the skills necessary for the use of computer software Photoshop and/or InDesign for architecture design processes and presentation techniques. Recommended WR/RD 115 and Math 20 or equivalent placement test. Prerequisite: ARCH 110. Audit available.

ID 131 Introduction to Interiors (3.00 CR) A study of the design elements and principles as applied to interiors. Includes skill development in drawing floor plans, analyzing furniture arrangement, and basic techniques for creating interior design presentation boards including floor plans, color boards, and elevation drawings. Prerequisite/concurrent: ARCH 110. Audit available.

ID 132 Planning Interiors (3.00 CR) Covers designing interiors utilizing design and furniture arrangement skills, and developing skills in selection of furniture, floor coverings, wall and window treatments, color, fabric and pattern, lighting and accessories. Prerequisites: (ARCH 126 or ID 125), ARCH 110, ID 131 Audit available.

ID 133 Space Planning (3.00 CR) Studies functional and aesthetic design requirements in residential space planning, kitchens and storage spaces. Relates housing aspects to needs of individuals, families, and special groups. Prerequisites: ID 131 or ARCH 161, ARCH 126 or ID 125, ARCH 124, ARCH 100, ARCH 100, ARCH 132, and placement into MTH 60 and WR 121. Audit available.

ID 135 Professional Practices for Designers (3.00 CR) Covers the business aspects of Design. Includes topics on ethics, contracts, licensing, ordering, client-designer relationships, costs, billing and fee structures, and legal considerations. Prerequisites: Placement into MTH 60. This is an advanced second year course. Audit available.

ID 138 Introduction to Kitchen and Bath Planning (3.00 CR) Incorporates basic functional and aesthetic design principles for residential kitchen and bath planning, and chronicles the kitchen and bath planning process from conceptual design to construction completion. Prerequisites: ID 131, (ID 125 or ARCH 126 or BCT 105) Audit available.

Courses

ID 234 Advanced Interiors (3.00 CR) Creative problems in interior design intended to develop an analytical approach to interiors. Based upon individual projects and includes advanced presentation skills. Prerequisites: ID 120, 121, 122, 123, 132, 133, 138, 230, 236; ARCH 111, 121 127. Prerequisite/concurrent: ID 135. Audit available.

ID 236 Lighting Design (3.00 CR) A study of interior lighting as it relates to residential interiors including terminology, lamps, fixtures, cost factors, developing lighting plans, design techniques and energy saving concerns. Prerequisites: ARCH 110; ID 131 or ARCH 201; Placement into MTH 60 and WR 121. Audit available.

ID 238 Advanced Kitchen and Bath Planning (3.00 CR) Incorporates advanced understanding of design principles and elements to analyze and evaluate functionality and aesthetic principles for residential kitchen and bath planning. Includes Universal Design as it relates to the kitchen and bath and incorporates an advanced understanding of the guidelines as established by the National Kitchen and Bath Association. Prerequisites: (ID 138 or ARCH 121 or BCT 229); (ARCH 132 or INSP 151) Audit available.

ID 280A Cooperative Education (6 CR): Kitchen and Bath Work or observe on approved job sites. Student receives a varied and complete as an experience as possible under job conditions. Credits are variable and based on the number of clock hours students spend on job site. Must be coordinated with the supervisor, instructor, and cooperative education specialist. Department permission required.

ARCH 100 Graphic Communication for Designers (3.00 CR) Addresses the fundamentals of perspective drawings as a communicative device. Develops perspective, freehand sketching and diagramming skills, by building a graphic vocabulary and establishing a language of architectural communication. Audit available.

ARCH 110 Introduction to Architectural Drawing (2.00 CR) Covers basic Architectural drawing skills including lettering, line quality, plans, elevations, sections and axonometric drawings. Audit available.

ARCH 111 Intro to Residential Construction Documents (3.00 CR) Covers standards of architectural drafting and preparation of construction documents for typical residential construction. Examines construction processes and terminology. Prerequisite: ARCH 110, 124 and (ARCH 126 or ID 125 or DRF 126) and (ARCH 161 or ID 138) Recommend: ARCH 121, 136. Audit available.

ARCH 121 Structural Systems I (2.00 CR) An overview of residential structural systems, including identification of structural members, loads and load paths and reading structural framing plans. Prerequisite/concurrent: ARCH 124. Audit available.

ARCH 124 Introduction to Building Systems (3.00 CR) An overview of residential building systems, including building construction, and heating, cooling, plumbing, electrical, and passive solar systems. Audit available.

ARCH 127 Introduction to Google SketchUp (3.00 CR) Introduces basic 3-D modeling terminology, concepts and tools used to create simple building models and useful everyday shapes using SketchUp 3-D modeling software. Audit available.

ARCH 132 Residential Building Codes (2.00 CR) Introduction to land use zoning and international residential building codes in residential and small commercial buildings. Selected portions of the code will be discussed, with application to sample building plans. Prerequisite: ARCH 121, 124. Audit available.

ARCH 200 Principles of Architectural Design (4.00 CR) Introduces concepts, theories, and practices of the discipline of architecture. Includes study of perceptual, environmental, technical and organizational concepts through lectures and individual projects in observing architectural spaces and forms. Audit available.

Art 215 History of American Residential Architecture (3.00 CR) Examines the historical origins and elements of American house styles in order to develop insights into the residential architecture of our own era. Audit available.